

BEAUMONT ORGANIC



SPRING SUMMER 2020

Contemporary Conscious Clothing



The House of Life: 19. Silent Noon

*Your hands lie open in the long fresh grass,—
The finger-points look through like rosy blooms;
Your eyes smile peace. The pasture gleams and glooms
‘Neath billowing skies that scatter and amass.
All round our nest, far as the eye can pass,
Are golden kingcup fields with silver edge
Where the cow-parsley skirts the hawthorn-hedge.
‘Tis visible silence, still as the hour-glass.*

*Deep in the sun-searched growths the dragon-fly
Hangs like a blue thread loosened from the sky:—
So this wing’d hour is dropt to us from above.
Oh! clasp we to our hearts, for deathless dower,
This close-companioned inarticulate hour
When twofold silence was the song of love.*

DANTE GABRIEL ROSETTI



FOREWORD

The Beaumont Organic Summer 2020 collection sees us return to the theme of raw nature, inspired by wild English meadows and the natural rugged beauty of the world that surrounds us every day. This feels more poignant than ever at a time when there is so much controversy and uncertainty in the modern world. Nature is something we can trust, a place of harmony and a sanctuary for both animals and humans to enjoy.

The palette, fabrics and textures in the collection reflect this inspiration with burnt, muted hues, beautiful linens and floral prints. Pursuing our ambition to lead the way in offering the best sustainable choices for our customers from wardrobe to lifestyle, we have further developed our homeware range and have also launched our first capsule collection of Beaumont Baby. To complement this, we have teamed up with Pachacuti, pioneers of the classic Panama hat; Lisa Taylor, renowned for her work with artisans creating printed garments; and Kitty Cloggs, sustainable footwear, to offer a well rounded selection of the best conscious products. These partners encompass our brand values and are also making their products responsibly from consciously sourced materials.

My final message to you this season is: buy less, be thoughtful about your purchases, and mindfully choose quality products that will last for years to come.

Thank you for your support and for believing in us. Together we can pave the way for fashion to have a sustainable future.

HANNAH BEAUMONT-LAURENCIA | DIRECTOR

ARYA-MAY LINEN DRESS IN BONE *Also available in Midnight and Sun.*



MARISSA ORGANIC COTTON DRESS IN HONEY *Also available in Bone, Bronze, Midnight.*



LISA TAYLOR

Lisa Taylor's eponymous brand is renowned for its luxury resort wear, accessories and homewares, showcasing pieces produced using recycled vintage saris, bold woodblock prints, and detailed embroidery techniques. Drawing on 25 years' experience in the fashion industry, Lisa started her brand with the aim of providing a beautiful curation of handcrafted pieces, inspired by global travel, which stand the test of time by transcending high-street trends. Her collections have an eclectic and modern sensibility, offering colour, print and embellishment all year round.

Lisa Taylor was a natural choice for a collaboration with Beaumont Organic, due to the mindful and sustainable values that are core to both brands. The capsule collection features an exclusive print in three beautiful tonal colours, offered in two signature dress silhouettes, alongside a separate camisole top and ruffled skirt.



PREVIOUS: MADELYN-PAIGE ORGANIC COTTON DRESS IN OFF WHITE & BONE

Also available in Off White & Midnight.

ABOVE: ABOVE: TULSI ORGANIC COTTON DRESS IN CREAM PRINT.

Also available in Pink and Green.



NOVA LINEN PLAYSUIT IN SUN *Also available in Bone and Midnight.*



ANDREIA-MAY LINEN DRESS IN SUN *Also available in Bone and Midnight.*



LINEN

Linen has been a staple of summer clothing for decades due to its ability to keep the wearer cool and comfortable, whilst also being incredibly hard-wearing.

Unfortunately, this beautiful artisanal fabric has lost popularity on the high street in recent years due to the time and cost involved in its production. But at Beaumont Organic we value the mindfulness and craftsmanship involved in linen productions, and the parallels this strikes with our own brand values.

All the linen used in the SS20 collection is produced using traditional sustainable techniques. The flax fibres, which are naturally smooth and straight, are taken from the stem of the linen plant and separated. The fibres are then emersed in water for up to two weeks, a process referred to as 'Retting'. The retted stalks are dried and left to cure before the next process of 'scrutching', in which a small wooden knife is scraped down the length of the fibres as they hang vertically, pulling the hardened woody casing from the fibres within. Once completed, the fibres are heckled with a bed of nails and the longest ones are selected for spinning and weaving into the finished sheets of linen.

Another benefit of using linen is the material's ability to absorb rich deep dyes. For this season, midnight navy and sun yellow sit alongside natural bone, creating a palette evocative of summer nights and sunrises.





PREVIOUS: GIANNA LINEN JUMSUIT IN BONE *Also available in Midnight and Sun.*

MAFALDA ORGANIC COTTON TOP IN BONE *Also available in Black, Midnight, Off White, Light Grey Marl.*

VALENTINA ORGANIC COTTON SKIRT IN BONE *Available in Black, Light Grey Marl.*

BAHYRA SHOPPER STRAW BASKET





ABOVE:

ABAM MOSES STRAW BASKET
 GABRIEL ORGANIC COTTON BABY KNICKER IN BONE
Also available in Cinnamon, Deep Indigo, Off White and Sun.

OPPOSITE:

CARMO ORGANIC COTTON MUSLIN CLOTH IN OFF WHITE
Also available in Bone, Cinnamon, Deep Indigo and Sun.
 BELMIRA ORGANIC COTTON DRESS IN OFF WHITE
Also available in Bone, Cinnamon, Deep Indigo and Sun.



HATS

Pachacuti has championed artisanal skills through their sustainable luxury brand for over 25 years.

All materials are consciously sourced for their environmental and social impact, thus contributing to a more sustainable design aesthetic. They believe that a luxury brand should not only deliver a beautiful product to the customer but provide a positive benefit to the makers too.

Our Quality Management System looks not just at the quality of our products and our operations, but at the quality of life for our weavers and producers of materials in the field.

We are excited to be collaborating with such an established brand whose ethos chimes so loudly with our own.

WIDE BRIM STRAW HAT IN NATURAL WITH OFF WHITE LINEN TIE
Also available with Black, Bone, Midnight and Sun ties.

BELMIRA ORGANIC COTTON DRESS IN OFF WHITE
Also available in Bone, Cinnamon, Deep Indigo and Sun.



OPPOSITE:
NATASHA-MAY ORGANIC COTTON DRESS IN WHITE *Also available in Dove and Midnight.*



HOMEWARES AVAILABLE EXCLUSIVELY AT 49 HILTON STREET

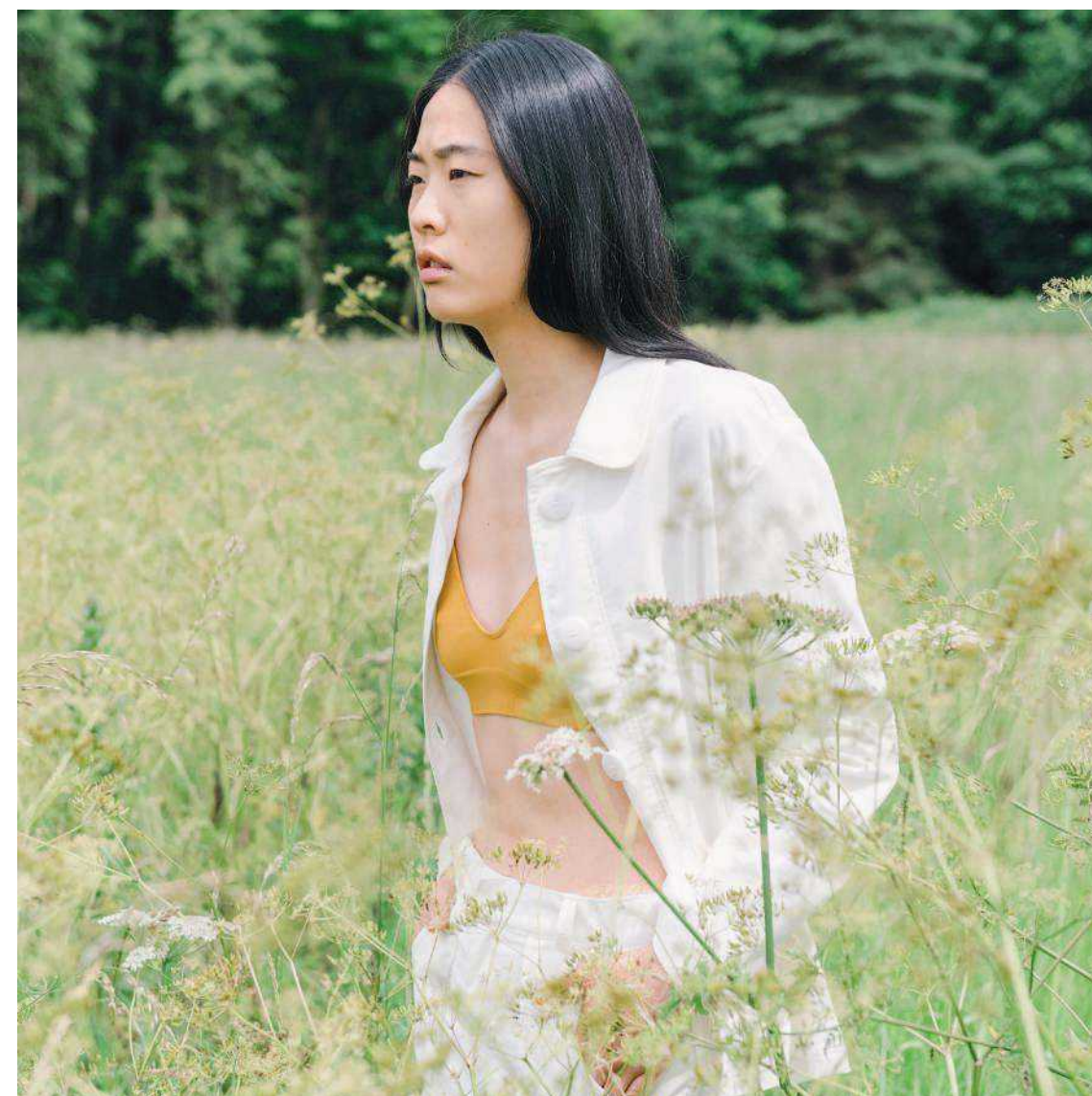
OPPOSITE:

MADELYN ORGANIC COTTON DRESS IN COFFEE *Also available in Black, Honey and Off White.*
STRAW SHOPPER WITH LEATHER HANDLE





BUMBLEBEE ORGANIC COTTON TSHIRT IN WHITE & HONEY *Also available in White.*
TRACEY ORGANIC COTTON CORDUROY TROUSERS IN SUN *Also available in White and Slate.*



SHARON ORGANIC COTTON CORDUROY JACKET IN WHITE *Also available in Slate and Sun.*
TRACEY ORGANIC COTTON CORDUROY TROUSERS IN WHITE *Also available in Slate and Sun.*
ILZE ORGANIC COTTON BRA IN OCRE. *Also available in Black, Blush, Nude and Sky.*





PREVIOUS:

ALESSANDRA-JANE ORGANIC COTTON JUMPER IN SUN *Also available in Navy and Off White.*
NICOLE-MAY LINEN TROUSERS IN BONE *Also available in Midnight and Sun.*



RITA-GEE LINEN GINGHAM TOP IN BLACK & WHITE
TRACEY ORGANIC COTTON CORDUROY TROUSERS IN WHITE *Also available in Slate and Sun.*



STELLA ORGANIC COTTON VEST IN OFF WHITE *Also available in Navy and Sun.*
NICOLE-MAY LINEN TROUSERS IN SUN *Also available in Bone and Midnight.*



JULIET-LOU LYOCCELL DRESS IN BRONZE *Also available in Light Grey Marl and Midnight.*



KEEPING GROUNDED

*This practice is to centre yourself
and feel physically grounded.*

*1. Sit or stand comfortably.
If sitting, keep your back straight
and shoulders relaxed. If standing,
keep your feet shoulder-width apart.*

*2. Rest your hands on your abdomen
(known as shiatsu or hara - the centre of the body).*

*Breathe in and out, noticing the expansion
and contraction of your breath and how it feels
beneath your hands.*

*3. Close your eyes and begin scanning your body,
from the top of your head to the tips of your toes.
Become aware of your breath into each part
of your body and acknowledge it.*

*4. As you inhale, imagine fresh energy
entering your body. As you exhale,
imagine tension leaving your body.*

Which areas of your body feel lighter?

*This exercise is about learning about your body
and how it feels at the beginning of the day.*

*We may ask others how they are,
but do we ask ourselves how we feel?*

WIDE BRIM STRAW HAT IN NATURAL WITH BLACK LINEN TIE
Also available with Bone, Midnight, Off White and Sun ties.

PENELOPE ORGANIC COTTON JUMPSUIT IN BLACK *Also available in Coffee, Honey and Sky.*



MAFALDA-SUE ORGANIC COTTON TOP IN BONE MARL & BLACK *Also available in Midnight & Natutral*
 ADDISON-SUE ORGANIC COTTON SKIRT IN BONE MARL & BLACK *Also available in Midnight & Natutral*



ALBER ORGANIC COTTON CORDUROY TOP IN WHITE *Also available in Slate and Sun.*
 TRACEY ORGANIC COTTON CORDUROY TROUSERS IN WHITE *Also available in Slate and Sun.*



ADELE LINEN DRESS IN NATURAL *Also available in Black*



ABBEY LINEN COAT IN NATURAL *Also available in Black*





PREVIOUS:

ELLIE ORGANIC COTTON DRESS IN BONE *Also available in Black, Blush and Bronze.*

BEE CHARM BRACELET IN GOLD *Also available in Silver.* BEE STUD EARRINGS IN GOLD *Also available in Silver.*

OPPOSITE:

BEE-MAY LINEN DRESS IN BONE *Also available in Midnight and Sun.*

WIDE BRIM STRAW HAT IN NATURAL WITH BLACK LINEN TIE *Also available with Off White, Bone, Midnight and Sun ties.*



ONLINE

For information on all our products, as well as details of how to order and return, please visit our website: beaumontorganic.com

STOCKISTS

To find a store near you or for information on stocking Beaumont Organic, please email: mail@beaumontorganic.com

CONTACT

If you have any questions or would like a friendly chat call us on: +44 (0) 161 971 9010 or email: mail@beaumontorganic.com

FOLLOW US

@beaumontorganic



PHOTOGRAPHY Emma Pilkington emmapilkington.com

MUA Lilo Jones

MODEL Meg Fuji

ASSISTANTS Helen Aye-Maung, Lisa Cheetham, Alessandra Mostyn, Mary Quijana

DESIGN Erica Singer

EDITOR Alessandra Mostyn

PAPER Munken by G.F Smith

Milled in Munkedal, Sweden. The natural qualities of the paper, are drawn from a desire to put the environment and the mill's impact on its natural surroundings as a first priority.

ABOVE: RITA-MAY LINEN TOP AND ROSE LINEN SKIRT IN BONE
Also available in Midnight and Sun.

KOR CLOG IN DESERT *Also available in Birch and Olivia*